

## JUTATOP® WB LIGHT

valid from 01.01.2013

Revision 11.02.2020

PROPERTIES	METHOD	UNITS	NOMINAL VALUE	TOLERANCE	
				MINIMUM	MAXIMUM

### Informative section:

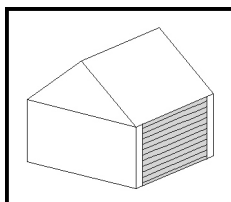
Length	EN 1848-2	[m]	>50	-	-
Width	EN 1848-2	[m]	*	-0,5%	+1,5%
Straightness	EN 1848-2	-	conforming	-	-
Mass per unit area	EN 1849-2	[g/m <sup>2</sup> ]	210	-20	+20
Visible defects	EN 1850-2	-	without visible defects		

### Normative part:

Reaction to fire	EN 13501 EN 11925-2	[class]	B	-	-
Resistance to water penetration	EN 1928	[class]	W1	-	-
Resistance to water penetration after artificial ageing	EN 13859-2 Annex C	[class]	W1	-	-
Water vapour transmission properties (Sd)	EN 12572	[m]	0,04	-0,02	+0,02
Tensile properties: Maximum tensile force MD / CMD	EN 12311-1 EN 13859-2	[N/50mm]	300 / 200	-70 / -30	+70 / +70
Max tensile force after artificial ageing MD / CMD	EN 13859-2 Annex C	[N/50mm]	290 / 190	-70 / -30	+70 / +70
Tensile properties: Elongation MD / CMD	EN 12311-1 EN 13859-2	[%]	25 / 25	-15 / -15	+10 / +10
Elongation after artificial ageing MD / CMD **	EN 13859-2 Annex C	[%]	20 / 20	-10 / -10	+10 / +10
Resistance to tearing MD / CMD	EN 12310-1 EN 13859-2	[N]	120 / 120	-20 / -20	+30 / +30
Dimensional stability	EN 1107-2	[%]	<1	-	-
Flexibility at low temperature	EN 495-5 EN 1109	[°C]	-40	-	-
Resistance to penetration of air	EN 12114 EN 13859-2	[m <sup>3</sup> /(m <sup>2</sup> .h.50Pa)]	< 0,03	-	-
Temperature Resistance	-	[°C]	-40 / +100	-	-
Hydrostatic pressure test	EN ISO 811	[cm]	-	-	-
Dangerous substances			npd		

Notes: MD - Machine Direction, CMD - Cross Machine Direction, npd - no performance determined; \* - according to requirement; \*\* - artificial ageing test of UV 5000 h (standart only 336h)

### PRODUCT APPLICATION



EN 13859-2:2010 Flexible sheets for waterproofing - Definitions and characteristics of underlays - Part 2: Underlays for walls

Breather waterproof roofing underlay manufactured from polyester and functional coating, to be used as a wind barrier for vertical wall construction. It can be installed directly on thermal insulation. Overlaps should be connected with recommended adhesive tape.