

JUTADACH® THERMOISOL NP WB

valid from 02.12.2014

Revision 05.05.2020

PROPERTIES	METHOD	UNITS	NOMINAL VALUE	TOLERANCE	
				MINIMUM	MAXIMUM

Informative section:

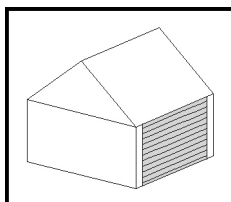
Length	EN 1848-2	[m]	>50	-	-
Width	EN 1848-2	[m]	1,5; 3	-0,5%	+1,5%
Straightness	EN 1848-2	-	conforming	-	-
Mass per unit area	EN 1849-2	[g/m ²]	210	-20	+20
Visible defects	EN 1850-2	-	without visible defects		

Normative part:

Reaction to fire	EN 13501 EN 11925-2	[class]	B	-	-
Resistance to water penetration	EN 1928	[class]	W1	-	-
Resistance to water penetration after artificial ageing *	EN 13859-1,2 Annex C	[class]	W1	-	-
Water vapour transmission properties (Sd)	EN 12572	[m]	0,1	-0,05	+0,05
Tensile properties: Maximum tensile force MD / CMD	EN 12311-1 EN 13859-1,2	[N/50mm]	380 / 420	-60 / -80	+60 / +80
Max tensile force after artificial ageing MD / CMD *	EN 13859-1 Annex C	[N/50mm]	340 / 380	-60 / -80	+80 / +100
Tensile properties: Elongation MD / CMD	EN 12311-1 EN 13859-1,2	[%]	40 / 55	-20 / -25	+20 / +20
Elongation after artificial ageing MD / CMD *	EN 13859-1 Annex C	[%]	35 / 50	-20 / -20	+20 / +20
Resistance to tearing MD / CMD	EN 12310-1 EN 13859-1,2	[N]	220 / 210	-60 / -50	+80 / +60
Dimensional stability	EN 1107-2	[%]	<1	-	-
Flexibility at low temperature	EN 495-5 EN 1109	[°C]	-30	-	-
Resistance to penetration of air	EN 12114 EN 13859-2	[m ³ /(m ² .h.50Pa)]	npd	-	-
Temperature Resistance	-	[°C]	-40 / +80	-	-
Hydrostatic pressure test	EN ISO 811	[cm]	> 300	-	-
Dangerous substances			npd		

Notes: MD - Machine Direction, CMD - Cross Machine Direction, npd - no performance determined ; * - artificial ageing test of UV 5000 h (standart only 336h)

PRODUCT APPLICATION



EN 13859-2:2010 Flexible sheets for waterproofing - Definitions and characteristics of underlays - Part 2: Underlays for walls

Breather waterproof roofing underlay, for pitched supported or unsupported roof construction for both applications, timber sarking or directly over thermal insulation with recommended overlap.